

A collection of various NEE cosmetics products including blush, eyeliners, eye makeup palette, mascara, lipstick, lip gloss, foundation, concealer, and skincare items, all displayed against a black background.

NEE MAKEUP MILANO PRODUCT BOOK

HISTORY

NEE MAKE UP MILANO IS A MAKE-UP BRAND WITH A LOT OF HISTORY. ATTENTION TO DETAIL, ACCURATE PRODUCT MATCHING, DELICATE FORMULAS AND AN INNOVATIVE APPROACH TO PRODUCT DEVELOPMENT ARE THE MAIN CHARACTERISTICS OF THE BRAND.

NEE MAKE UP MILANO WAS FOUNDED IN THE EARLY '90S IN LISSONE, A SMALL TOWN NEAR MILAN. A PROFESSIONAL MAKE-UP LINE, CREATED AND DEVELOPED BY PROFESSIONALS FOR PROFESSIONALS AND USED BY THE BEST AND THE MOST FAMOUS MAKE-UP ARTISTS. THE QUALITY OF THE PRODUCTS DID NOT GO UNNOTICED AND RAPIDLY GAINED A LOT OF POPULARITY BOTH ON THE NATIONAL AND INTERNATIONAL COSMETIC MARKETS, SOON BECOMING ONE OF THE LEADING PROFESSIONAL BRANDS.

IN 2005, NEE MAKE UP MILANO WAS SOLD TO R.C.M. GROUP JOINING FORCES WITH EVERLINE, EVERLINESPA AND EVERLINE CENTER BRANDS. NOW A POWERFUL FORCE ON THE PROFESSIONAL MARKET.

THE R.C.M. HEADQUARTERS ARE LOCATED IN SERIATE NEAR MILANO, JUST OUTSIDE OF BERGAMO. HERE EVERYTHING COMES TOGETHER. INSPIRATIONS, IDEAS AND TRENDS TURN INTO CONCEPTS AND FROM THOSE CONCEPTS COLLECTIONS AND PRODUCTS ARE CREATED, DEVELOPED AND REINVENTED. A TEAM OF NATIONAL AND INTERNATIONAL PROFESSIONALS IS WORKING EVERYDAY NOT ONLY TO STAY ON TREND BUT MORE TO SET TRENDS, ALWAYS TRYING TO STAY AHEAD OF THE CURVE.

THE GREAT EXPERIENCE ACHIEVED IN THE COSMETIC FIELD, THE ATTENTION TO RAW MATERIALS, THE SOPHISTICATED SCIENTIFIC KNOWLEDGE AND THE ADVANCED TECHNIQUES USED IN THE LABORATORIES LEAD TO THE CREATION OF MAKE-UP PRODUCTS OF EXCELLENT QUALITY WHICH ARE SUBJECTED TO THE MOST SEVERE DERMATOLOGICAL TESTS. NEE MAKE UP MILANO IS A GAME CHANGER NOT A FOLLOWER, CREATING TRENDS THROUGH INNOVATION AND EXPERIENCE WITH COLLECTIONS OF THE HIGHEST QUALITY AND THERE FOR 'EVERY' WOMAN WHO NEEDS SOME BEAUTY AND ELEGANCE IN HER LIFE. NEE MAKE UP MILANO WILL NEVER FAIL TO ENHANCE A WOMAN'S BEAUTY!

FACE

PRIMER

FLUID FOUNDATION

MOUSSE & COMPACT FOUNDATION

CONCEALER

POWDER

BRONZER

FACE & CHEEKS

HIGHLIGHT

CLEANSING & FIXING

PRIMER



FACE REJUVENATING PRIMER 30 ml

SKIN TYPE all skin types

EFFECT fresh faced and rejuvenated, looking rested

FINISH semi-matte flawless finish

TEXTURE transparent liquid gel

DESCRIPTION hydrating and anti-aging face primer. Rich in active ingredients. It's the perfect base for any make-up or to use as your daily face cream

STRENGTHS it contains the ATPeptide, an energizing and revitalizing peptide that stimulates cell metabolism, preventing and slowing down the aging process

HOW TO APPLY with your fingertips, tap a small amount of product on to face and neck. Gently massage the primer into the skin using soft circular movements



PERFECTION UV MULTI BASE PRIMER SPF 50+ 50 ml

SKIN TYPE all skin types

TEXTURE soft and creamy

DESCRIPTION moisturizing face primer SPF 50, MAT effect. Light and creamy to the touch, perfect as a makeup base for a smoothing and lasting result

STRENGTHS its light and silky texture does not weigh down the skin and is not greasy. It protects from wrinkles, free radical damage and imperfections related to the photoaging. Prevents damage caused by sun, pollution, cold, preventing and slowing down the skin aging process

HOW TO APPLY apply a small amount of product on face and neck by tapping with your fingertips. Massage with gentle circular movements to distribute the product uniformly

PRIMER



PERFECTION BASE NUDE LOOK 30 ml

SKIN TYPE for all skin types

TEXTURE creamy nude nuance

DESCRIPTION refining and illuminating facial base. Used alone, gives a uniform effect of the color of the face. When applied as a base, it guarantees a greater seal of the foundation

STRENGTHS innovative and technological formulation, captures light and reflects it on the face minimizing the visibility of imperfections

SELLING POINT its nude tone suits every skin type giving a natural and radiant appearance to the skin

HOW TO APPLY apply a small amount of product on the cleansed and hydrated face. Distribute with circular movements



PERFECTION BASE CORRECTOR LOOK - GREEN 30 ml

SKIN TYPE reddened skin, with discoloration

TEXTURE creamy, invisible coverage

DESCRIPTION toned face primer, specific to neutralize discoloration and redness, harmonizing the skin. Light and velvety texture, to ensure maximum comfort and increase the duration of make up. Gives a splendid and luminous color

STRENGTHS innovative formulation designed to correct the color adapting to the needs of each complexion. Enhances the natural brightness of the skin

SELLING POINT excellent primer, prepares the skin to make-up, nourishes intensely and keeps the foundation for longer time. The skin has a perfect color, no defects

APPLICATION apply after the normal skincare routine. Distribute evenly over the entire face. Proceed with the application of the foundation



green

PRIMER



PERFECTION BASE CORRECTOR LOOK - LILAC 30 ml

SKIN TYPE skin with yellow or gray undertones

TEXTURE creamy, invisible coverage

DESCRIPTION toned face primer, specific to balance and neutralize a yellow undertone and turn off the characteristic grayness of dull color. Fluid and light texture, revives and illuminates the complexion, ensures maximum comfort and increases the duration of make up.

STRENGTHS can also be used as an illuminant by applying the product on the forehead or on the back of the nose. Natural finish, invisible coverage

SELLING POINT prepares the skin to make-up and nourishes it intensely for a skin with a perfect and luminous color

APPLICATION apply after the normal skincare routine. Distribute evenly over the entire face. Proceed with the application of the foundation



lilac

FLUID FOUNDATION



ABSOLUTE PERFECTION FOUNDATION 30 ml

SKIN TYPE for all skin types

COVERAGE medium - high

DESCRIPTION fluid, natural and light texture foundation. Sublime the complexion, hides imperfections, it is extremely comfortable and moisturizing. Leave the skin velvety and soft to the touch

STRENGTHS enriched formula with Signaline-TM S - botanical, nourishing and regenerating cell activation signal. Vitamin E known for its anti free radical and antioxidant properties. Long lasting formula. Matte effect. Curative and cosmetic action.
Prepares - covers - corrects

HOW TO APPLY shake well before use. Spread on the back of the hand and apply with Nee Brush Foundation nr. 9 or with the appropriate sponge. Proceed with the application of the upper part of the face downwards and from the midline to the outside



G0 nude G1 soft beige 01 porcelain 02 sand 03 olive 04 sun



PERFECT SKIN OXYGEN FOUNDATION SPF15 25 ml

SKIN TYPE normal, dry & combination skin, sensitive skin

FINISH beautiful dewy radiant looking skin

COVERAGE medium-high

TEXTURE liquid

DESCRIPTION regenerating and smoothing fluid foundation, perfect to get a uniform skin complexion and eliminate any imperfection and skin discoloration

STRENGTHS enriched with Oxygen Complex, a natural active ingredient that helps the skin to stimulate the cell metabolism. Great for sensitive skin as it is alcohol and perfume free. With SPF 15

HOW TO APPLY pump a few drops of product on the back of your hand and apply it with a latex sponge or with Nee foundation brush n. 9



OX0 OX1 OX2 OX3

FLUID FOUNDATION



DOUBLE ACTION

LIFTING FOUND. WITH VEGETAL STEM CELLS SPF10 15 + 15 ml

SKIN TYPE combination, oily & mature skin

FINISH flawless blemish free looking skin

COVERAGE high

TEXTURE liquid gel

DESCRIPTION fluid foundation enriched with a special stem cell gel. It comes with a double pump to separate the gel from the foundation and preserve the active ingredients

STRENGTHS gel with vitamins and active ingredients extracted from vegetal stem cells. Intense nourishing and hydrating foundation. The lifting effect of the gel reduces the appearance of wrinkles. This foundation does not need a powder

HOW TO APPLY pump the same quantity of gel and foundation on the back of your hand. Mix the 2 products together before application. Apply with a latex sponge or the Nee foundation brush n. 9



D0

D1B

D2

D2B

D3



LIQUID POWDER

MATTE EFFECT 30 ml

SKIN TYPE combination and oily skin

FINISH natural looking matte finish

COVERAGE medium

TEXTURE liquid

DESCRIPTION this innovative easy to apply foundation acts as both a foundation and a powder

STRENGTHS this oil free foundation contains quince extract, with antioxidant and anti-aging properties, and hyaluronic acid, with hydrating and revitalizing properties

HOW TO APPLY very easy to use, apply just a small quantity of the product on the back of your hand and spread with a latex sponge or with Nee foundation brush n. 9



128

129

131

MOUSSE & COMPACT FOUNDATION



SENSORY MOUSSE MATTE FOUNDATION - OIL FREE 18 ml

SKIN TYPE combination and oily skin

FINISH ultra smooth and silky flawless finish

COVERAGE high

TEXTURE powder cream

DESCRIPTION soft texture mousse foundation. Easy to blend, fast-drying product. It gives a long lasting matte effect. Perfect for skin with imperfections, wide pores and severe discolorations

STRENGTHS contains mattifying active ingredients and absorbing powders that guarantee a smooth and matte skin all day

HOW TO APPLY apply the foundation with a soft touch with Nee brush n. 10



COMPACT FOUNDATION VITAMIN E 10 ml

SKIN TYPE all skin types

FINISH radiant flawless skin free of blemishes

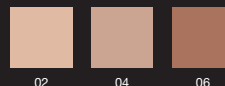
COVERAGE medium-high

TEXTURE cream

DESCRIPTION a professional compact foundation with a soft, easy-to-apply texture. It is designed to feel like a second skin. Flexible hydrated skin all day. The foundation gives a uniform colour to the skin and reduces blemish and discoloration

STRENGTHS rich in vitamin E, a powerful antioxidant, that captures and destroys free radicals protecting the skin from premature aging.

HOW TO APPLY apply the foundation with the included sponge



MOUSSE & COMPACT FOUNDATION



DUAL MATTE WEAR

COMPACT POWDER & FOUNDATION SPF15 8 g

SKIN TYPE for mixed, oily or very oily skin

COVERAGE with brush - natural / with damp sponge - high

DESCRIPTION powder compact wet & dry foundation. The coverage of a foundation and the texture of a powder. Minimizes imperfections and pores, mattifies the skin complexion for a long time and absorbs excess sebum

STRENGTHS formula enriched with active ingredients extracted from the brown seaweed, a powerful, elastic antioxidant. Comes in six shades to suit every type of complexion and skin radiance. Exceptional smoothness and comfortable application, guaranteed by the innovative sponge included in the box and made in duocell, the latest generation material for powder foundation. Excellent resistance, also suitable for sensitive and delicate skin

HOW TO APPLY apply with dry brush Duo Fiber Brush nr. 10 or dry sponge for a natural effect and for touch-ups. Apply with a moistened sponge for a higher coverage



500
pastel

504
cachemire
sand

501
face

502
butterum

503
mou

505
icon brown

535
tan

CONCEALER



CONCEALER 1.5 ml

SKIN TYPE all skin types

FINISH free of light blemishes and soft circles under the eyes

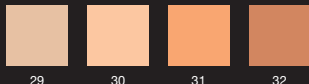
COVERAGE medium

TEXTURE cream

DESCRIPTION stick concealer rich in vitamins. Perfectly corrects and veils small imperfections and discolorations. Multifunctional product

STRENGTHS the formula contains vitamins and the creamy texture allows a perfect and comfortable application securing long lasting results. Can be applied directly from the stick or with a small brush or sponge

HOW TO APPLY apply directly onto and around the light blemishes directly from the stick or with blend brush n. 4. Blend securely where needed



CONCEALER PENCIL 1.6 g

SKIN TYPE all skin types

COVERAGE medium

DESCRIPTION corrector pencil with the perfect shade to conceal discolorations, re-define an irregular or smudged lip contour, retouch small spots that appear even after applying a foundation or a powder

STRENGTHS soft and adherent texture. Easy to use. Take it always with you to cover small imperfections or for quick touch-ups

HOW TO APPLY apply the product directly on the area to cover. Carefully blend using nee concealer brush n. 4



CONCEALER



CAMOUFLAGE 3 ml

SKIN TYPE all skin types

FINISH free of light to intense blemishes and port-wine stains (red birthmarks)

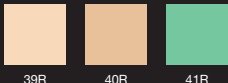
COVERAGE high

TEXTURE cream

DESCRIPTION highly covering, long lasting concealer. Ensures a perfect correction of severe skin imperfections such as discolorations, angiomas, scars and blotches

STRENGTHS a professional concealer with a very high covering and long lasting formula that is rich in emollient oils and antioxidants. This camouflage covers any blemish, no matter how severe

HOW TO APPLY apply the camouflage with brush n. 3 or n. 4 (depending on the area of the face) or with a latex sponge. Slightly warm up the product (by rolling it in your hand palms) for easier application. Tap on the skin with your fingertips for smaller imperfections



39R

40R

41R



BRIGHTFLASH ILLUMINATING LIQUID CONCEALER 2 ml

SKIN TYPE all skin types

FINISH radiant and illuminating skin

COVERAGE low to medium

TEXTURE liquid

DESCRIPTION fluid concealer pen, perfect for highlighting different areas on the face, reducing dark circles under the eye, and eliminating shadows

STRENGTHS hydrating and anti-aging formula with Vitamin A and E and hyaluronic acid, illuminates and protects the skin. Smooth and light fluid texture. Easy to use because of its brush applicator. Concealing (before foundation) and illuminating (after foundation)

HOW TO APPLY turn the base of the pen until the desired amount of product is released. Apply small amounts of products where needed and blend with the brush or your fingertips. For a more precise application use Nee brush n. 4 or a latex sponge



C1

C2

C3

CONCEALER



WEIGHTLESS LIQUID CONCEALER 7.5 ml

SKIN TYPE all types of skin

COVERAGE high

DESCRIPTION correction fluid, hydrates and minimizes dark circles and imperfections, visibly reduces swelling around the eyes

STRENGTHS its formula contains a filler with soft focus intense action, which acts on small wrinkles making them more smooth and polished. Texture enriched with vitamin E - Rosemary Extract & Caffeine, from anti-aging, anti-oxidants and emollients. Ideal to correct and minimize dark circles and imperfections related to the eye area. Also perfect for the skins that are not so young, because the formula does not dry and does not settle even in the smallest wrinkles

HOW TO APPLY directly applied to the area or using Nee Brush nr. 4 or an appropriate sponge



N0
ivory



N1
sand



N2
honey
biscuit

POWDER



LOOSE POWDER 12 g

SKIN TYPE all skin types with exception of mature skin

FINISH colourless silky smooth finish

COVERAGE soft to medium

TEXTURE light micro capsulated silky particles

DESCRIPTION mattifying, silky loose powder to set the foundation with a natural colourless matte finish

STRENGTHS a professional soft and ultra light powder. Fixes the foundation for a natural looking skin with a soft matte finish

HOW TO APPLY for a light coverage, measure out a small amount on the cap and apply all over the face and neck with Nee brush n. 12. For stronger coverage, dap the powder into the skin with the Nee powder puff



37



A35
bran



LOOSE POWDER HD 12 g

SKIN TYPE all skin types

TEXTURE new HD powder formula, ultra light

DESCRIPTION high definition loose powder thought to create photo shooting make-ups and to use every day for a professional look. It creates a “soft focus” effect, perfect to fix the make-up on the face

STRENGTHS extremely soft, invisible and ultra light powder. Fixes the foundation and conceals thin lines and skin imperfections for a professional look all day long, even during photo shootings

HOW TO APPLY apply with the powder puff or with Nee Brush n. 12



39
transparent

POWDER



COMPACT POWDER VITAMIN E 8 g

SKIN TYPE all skin types

FINISH velvet soft finish without looking 'powdery'

COVERAGE medium to strong

TEXTURE compressed powder

DESCRIPTION mattifying compact powder in different skin tones. Sets the foundation leaving the skin looking and feeling like silk. The powders are light in perfect skin colors and feel like a second skin

STRENGTHS high coverage powders that look flawless and light

HOW TO APPLY apply with Nee brush n. 12 for a soft finish or with the powder puff for high coverage



33

34

35

37

38



NO-TRACE COMPACT POWDER 8 g

SKIN TYPE all types of skin

TEXTURE silky and velvety finish

DESCRIPTION compact powder. It minimizes small imperfections, maintains the natural transparency of the skin without giving up lighting

STRENGTHS balances and mattes the skin, thanks to the precious and very thin soft focus powders. Suitable for all skin tones and all ages

SELLING POINT gives brightness, transparency and a uniform appearance throughout the day

APPLICATION take a small quantity of product with Nee Brush nr. 12 or n. 13 for the eye contour. Remove the excess and apply with circular movements on the entire face. For a natural effect use Nee Powder Puff. Proceed with the completion of the make-up



BRONZER



LIQUID BRONZE INTENSIVE HYDRATING 50 ml

SKIN TYPE all skin types

FINISH flawless sunkissed skin

COVERAGE light to medium

TEXTURE liquid

DESCRIPTION fluid bronzer, gives an immediate, natural tanned look. soft and silky and very easy to apply evenly

STRENGTHS formula enriched with hyaluronic acid, with an intense hydrating and anti-aging effect, and Vitamin E, powerful antioxidant that help reduce wrinkles. This innovative bronzer acts as a second skin and no foundation is needed. The skin looks radiant. The liquid bronzer is also perfect for men

HOW TO APPLY apply a small amount of product on the back of your hand and spread with Nee brush n. 9 or use your fingers to evenly spread the bronzer



A150

B154

C152



COMPACT BRONZER VITAMIN E 10 g

SKIN TYPE normal, combination and oily skin

FINISH intense bronzed after one application

COVERAGE medium to strong

TEXTURE compressed powder

DESCRIPTION bronzing compact powder enriched with ultra-micronized particles. The smooth, adherent texture grants perfect long lasting matte and natural results

STRENGTHS enriched with Vitamin E whose anti-aging and antioxidant properties protect the skin from free radicals and reduce the ageing process. Classic compact bronzer, professionally performing. High pigmentation, multifunctional use, easy to blend

HOW TO APPLY apply a small amount of product on face, neck and cleavage with Nee brush n. 12 and blend until the desired effect



51

52

53

BRONZER



TERRA BRONZE 8 g

SKIN TYPE all skin types

TEXTURE natural bronzer effect

DESCRIPTION delicate bronzing powder, creates light and gives intensity to the whole face, outlining the contours. Soft texture thanks to the nourishing oils included in the formulation

STRENGTHS the precious argan oil, jojoba oil and vitamin E provide hydration and protection to the skin. Excellent elasticity and anti-aging action.

In a single gesture it gives a naturally bronzed appearance to the clearer skin and illuminates the complexions already tanned, like after a day spent outdoors

HOW TO APPLY apply a small amount of product with the new Kabuki brush, apply on face, neck and décolleté and blend in a circular movements until the desired effect



TERRA DUO 9 g

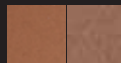
SKIN TYPE all skin types

TEXTURE natural tanned effect

DESCRIPTION color and brightness for this Terra Duo that revives and warms the skin, for a natural effect tan all year round. Its light and easy to blend texture slides on the skin and blends with the complexion for a bright bonne mine effect

STRENGTHS its precious active ingredients such as argan, jojoba oil and vitamin E ensure high hydration and protection to the skin. Excellent elasticizing and anti-aging action. The two shades, matte and satin can be used alone or combined, for perfect make-up effects both for the day and for the evening

APPLICATION apply a small amount of product using Nee Brush nr. 12 or Nee Kabuki. Spread on face, neck and décolleté. Blend in circular motions until the desired effect is achieved



tan & halo

BRONZER



TERRACOTTA BRONZER 6.5 g

SKIN TYPE dry and dehydrated

FINISH healthy looking soft bronzed skin

COVERAGE strong

TEXTURE baked powder

DESCRIPTION pure pearl infused bronzing terracotta that leaves the skin radiant and healthy looking

STRENGTHS new baked formula with silky and velvet particles. Contains rosemary oil that hydrates and tones up the skin, leaving it looking healthier and feeling flexible. Can be used on body and face

HOW TO APPLY apply a small amount of product on face, neck and cleavage with Nee brush n. 12 and blend with circular movements until the desired effect



251

252



TERRACOTTA SHIMMER 8.5 g

SKIN TYPE all skin types

FINISH natural bronzer effect

TEXTURE baked powder

DESCRIPTION perfect to use as bronzer, blush and brightener. On pale skin gives a natural bronzer effect, on tanned skin exalts the intensity and brilliance

STRENGTHS the silky and light formula, enriched with rosemary oil fragrance, helps to maintain the skin young and elastic, for a shiny, perfect and lasting result. The three tones can be mixed or used alone for sublime results

HOW TO APPLY Face: mix the three tones and apply starting from the center towards the temples.

Eyes: for an intense look use the gold and bronze tone, for a natural look choose the pink one

Cheekbone: use the bronze and pink tone to enhance the cheekbones glow



FACE & CHEEKS



COMPACT BLUSH VITAMIN E 6 g

SKIN TYPE all skin types

FINISH natural or intense but always healthy looking cheeks

COVERAGE medium to high

TEXTURE compressed powder

DESCRIPTION compact powder blush, that's easy to apply and blend. The subtle and invisible particles match the skin texture and add color and/or shine

STRENGTHS compact, highly pigmented formula. A small amount of product is sufficient. Comes in a large amount of colours

HOW TO APPLY apply a small amount of product on the cheeks with Nee brush n. 11, blending it from the hairline inwards



B61

B62

B64

B65

B67

B68
sculpting

B69



BLUSH COTTO 4.5 g

SKIN TYPE all skin types

FINISH radiant transparent 3D effect

COVERAGE low

TEXTURE baked compact

DESCRIPTION soft baked blush for a 3D effect on your cheeks and a radiant young look. It's very easy and fast to apply

STRENGTHS new baked formula, with emollient and antioxidant oils. Hydrates and protects the skin, giving it a long lasting shine. The golden pearls leave transparent sparks of light on the face

HOW TO APPLY apply a small amount of product with Nee brush n. 11 and blend



X1
natural
rouge

X2

X3
sangria

X4
nettare
di pesca

FACE & CHEEKS



CREAM BLUSH 1.5 g

SKIN TYPE dry, normal and combination skin

FINISH super natural healthy glow

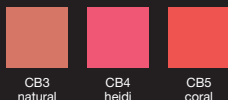
COVERAGE transparent

TEXTURE cream

DESCRIPTION cream blush, easy to use, easy to blend.
Natural fresh faced finish. Perfect for highlighting and enriched with hydrating and emollient active ingredients

STRENGTHS easy to apply impossible to smudge formula with active ingredients that protect and moisturize the skin, leaving it soft and smooth. Do a quick touch up with your fingers if you feel washed out or tired

HOW TO APPLY dab the desired color with your fingertips onto the cheekbones. Impossible to smudge



TWIN BLUSH 8 g

SKIN TYPE all skin types

TEXTURE soft and adjustable

DESCRIPTION blush very light, in two cool shades perfect for the summer season, long lasting formula

STRENGTHS its texture, a soft and silky powder, spreads and fades easily and gives a modulated effect, thanks to the two shades that fit perfectly the 'maquillage bonne mine' or bronze.
Indispensable product to enhance the complexion of the cheeks

HOW TO APPLY apply a small amount of product with the Nee brush n.11 and blend. Spread on the cheekbone fading up to the temples



FACE & CHEEKS



CHEEKS & LIPS 3 g

SKIN TYPE all skin types

TEXTURE modular creamy effect

DESCRIPTION Blush for cheeks and lips, for an immediate brightness, with a light moisturizing and illuminating finish. Its texture blends with the skin leaving a veil of color for a bonne mine effect

STRENGTHS dermo-related active ingredients formula for an exceptional make-up result. Emollient and protective action for skin and lips. Two-in-one multifunctional product, for a total look easy to make and for quick adjustments during the day.

HOW TO APPLY directly apply on the cheekbones and quickly fade with the fingertips. Apply to the lips, tapping the color from the center of the mouth to the sides for the upper lip, and from the corners to the center of the lower lip. For a natural and luminous look, apply on the cheekbones combining with Nude Glow Serum



cherry

HIGHLIGHT



MR. STROBE 9 g

SKIN TYPE all skin types

TEXTURE multifaceted effect shine

DESCRIPTION enlightening and velvety transparent powder. The pigments blend perfectly with the skin to make it look shining

STRENGTHS silky and impalpable texture. Its microfine pigments are combined with the skin for a very natural and luminous result. Formula enriched with squalane that protects the skin, thanks to its ability to regenerate the lipid film. Also is an amazing moisturizing and reduces the evaporation of water from the deepest skin layers. Sunkiss effect, brilliant result and natural freshness

HOW TO APPLY spread the product using the Nee brush nr. 12. Apply to face and neck with circular movements until the desired result and the correct brightness are achieved



CREAM BLUSH BABY STROBE 1.5 g

SKIN TYPE all skin types

TEXTURE creamy and luminous adjustable effect

DESCRIPTION easily blending cream blush. It guarantees a natural and luminous look, perfect for enhancing the volume of cheekbones and cheeks

STRENGTHS formula enriched with dermo-active agents that exert an emollient and protective action, leaving the face soft and smooth

SELLING POINT easy to apply and blend with your fingers, perfect for quick touches throughout the day. It merges perfectly with the coloring, giving brightness

HOW TO APPLY take the product with your fingers and gently tap on cheeks. To facilitate the application, smile so that it naturally emphasizes cheeks and blend to the temples



CB6
baby strobe

HIGHLIGHT



ALL OVER SHIMMER 1.2 g

EFFECT illuminates face, neck and cleavage

TEXTURE impalpable and opalescent powder

DESCRIPTION delicate and imperceptible sparkle that will wear your nights. Illuminates and sublimates the skin, neck and cleavage skin

STRENGTHS formula enriched with hydrating active ingredients. Silky and delicate texture. Multifunctional product that is perfect non only for the face. Easy to apply, gives a smooth effect and a super chic look in a few seconds

HOW TO APPLY with the specific sponge or nee blush brush n. 13 apply All Over Shimmer Fiocco di Neve directly on the areas to be illuminated



fiocco
di neve



MRS. STROBE LIQUID 7.5 ml

SKIN TYPE all types of skin

COVERAGE medium-high

DESCRIPTION delicate emulsion, ideal to emphasize the natural glow of the face. It minimizes small imperfections, revitalizes tired skin, provides an immediate radiant and anti-aging effect

STRENGTHS thanks to its precious texture, enriched with multifaceted pearls, gives a perfect adhesion to the skin, creating fantastic points of light. The product can be mixed with Oxygen Nee Foundation for a bright and radiant effect on the entire face

HOW TO APPLY apply directly to the desired area. Blend thoroughly using Nee Brush nr. 4 or an appropriate sponge



HIGHLIGHT



NUDE GLOW SERUM 15 ml

SKIN TYPE for all skin types

TEXTURE light and illuminating

DESCRIPTION multitasking serum from radiant and metallic finish, for a light all-over glow. It can be worn alone, as an illuminating and to create light spots, or mixed with the foundation for a fresh and illuminating coverage

STRENGTHS its non-greasy texture, extremely lightweight, is designed for every skin type, does not grease and does not obstruct the pores. Enriched with illuminating pearls and vitamin E

SELLING POINT multitasking product, can be used alone or mixed with other textures to create endless looks. Radiant make-up effect

HOW TO APPLY apply and blend directly with the fingertips on small facial areas. It can also be mixed with Nee Make Up Milano Fluid Foundation to create a luminous and silky texture



STROBING PALETTE 1 x 9 g / 1 x 1.5 g / 2 x 3 ml / 1 x 2 g

SKIN TYPE all types of skin

COVERAGE medium

DESCRIPTION magnetic palette designed to create a perfect strobing make up. contains five products in tester format ideal to create the proper effect of brightness for the face and décolleté

STRENGTHS innovative formula and different textures to achieve a correct strobing make up. The strobing effect is the new frontier in the make-up to give your face a radiant complexion and an immediately smoother skin

HOW TO APPLY for a correct application of the powders, Nee Make Up recommends the use of brushes n. 13.11.66. For cream products we recommend the use of brush nr. 4/6/10



mr.
strobe



baby
strobe



E71
pastel



E72
white



highlighter

HIGHLIGHT



SHIMMER COOL FACE 12 ml

SKIN TYPE all skin types

TEXTURE creamy, light

DESCRIPTION illuminating, three-dimensional fluid to apply every time you want to add a shimmery effect to your makeup

STRENGTHS formula enriched with light reflecting micronized particles, beeswax, hyaluronic acid and brown algae extract. With an anti-age effect, it gives hydration, shine and protection to the skin and reduces expression lines and wrinkles. Emphasizes the points of light like the cheekbones, the back of the nose and the center of the upper lip, increasing their volume immediately and giving a healthy and bright look to the skin

HOW TO APPLY apply a small quantity to define the points of light with Nee Medium Shader Brush n. 7 or Large Shader Brush n. 8 after the foundation. Perfect also to tap directly on the areas you want to illuminate with your fingertips



nude



bronze

CLEANSING & FIXING



EYES & LIPS MAKE-UP REMOVER GEL 150 ml

SKIN TYPE all skin types

FINISH clean

TEXTURE liquid gel

DESCRIPTION make-up remover gel with thermal oligoelements and flower waters with remineralizing, soothing and hydrating properties. Removes all make-up leaving the skin feeling soft and moisturized

STRENGTHS formula enriched with active ingredients. Hydrates, protects, soothes the skin. No rinsing required. Paraben free

HOW TO APPLY pour a small quantity of product on a cotton pad and remove the make-up starting from eyes, then lips and then the rest of the face



BI PHASE EYE MAKE-UP REMOVER 150 ml MINI BI PHASE 20 ml

SKIN TYPE all skin types, even the most sensitives

TEXTURE delicate and enriching

DESCRIPTION biphasic makeup remover for the eyes. instantly and gently removes all traces of makeup, even waterproof, leaving the eyelashes and eyelids perfectly moisturized and clean

STRENGTHS gentle and moisturizing formula, containing chamomile and calendula extracts which have soothing and calming effects. An indispensable ally for your eyes. Ultra gentle and effective formula. Physiological pH

HOW TO APPLY biphasic formula, shake well before use. Pour the lotion into a soft cotton wool and massage gently to remove the make up from the eyelashes and eyelids

CLEANSING & FIXING



CLEANSING OIL 50 ml

SKIN TYPE all skin types (especially oily skin)

FINISH clean

TEXTURE delicate oil

DESCRIPTION cleansing oil with a silky formula that purifies and protects the skin removing make-up and excess oil. Leaves the skin fresh, radiant and healthy

STRENGTHS cleansing, deterging and hydrating oil. Removes every trace of make-up and is perfect for waterproof make-up. The oil detracts sebum from the skin and is therefore perfect for oily skin

SELLING POINT deterging and cleansing oil. One product that deterges and removes make-up. To be rinsed with water after use

HOW TO APPLY pour a few drops of the product on the palm of your hand and gently massage it on your face, skin must be dry. Wait a minute (2 to 3 minutes for oily skin). Then wet your face with just a bit of lukewarm water, the oil will transform into a white soft foam. Rinse off all the foam with plenty of lukewarm water



MICELLAR CLEANSING WATER 200 ml

SKIN TYPE all skin types, even the most sensitive

TEXTURE soft and delicate

DESCRIPTION leave-in gentle and soothing micellar water. In a single gesture it cleanses and removes the make-up from face, eyes and lips. The skin is deeply cleansed and immediately appears luminous and toned

STRENGTHS micellar water enriched with extracts of yarrow, calendula and St. John's wort. Moisturizing, toning and cooling, it's perfect even for the most sensitive skin. Unlike the cleansing milk, the micellar water does not leave oily skin, but clean, fresh and hydrated skin

HOW TO APPLY use directly on face and neck using a cotton pad. Proceed with a gentle massage to remove makeup and impurities. No rinsing needed

CLEANSING & FIXING



MAKE-UP FIXER 150 ml

MINI MAKE-UP FIXER 50 ml

SKIN TYPE all skin types

TEXTURE liquid spray

DESCRIPTION fast drying make-up fixer, rich in active ingredients that increase the lasting results of any make-up up to 12 hours

STRENGTHS formula enriched with hydrating and fixing ingredients that softly protects the skin helping the makeup to last longer. Use it as a re-freshener in the summer

HOW TO APPLY spray the fixer from about 30 cm away from the face and directly on the makeup. Repeat 2 to 3 times

EYES

PRIMER

EYESHADOW

PENCIL

EYELINER

MASCARA

EYEBROW

PRIMER



RADIANT EYE PRIMER 7 ml

SKIN TYPE all skin types

FINISH radiant, sparkling, champagne touched eyes

COVERAGE transparent

TEXTURE liquid cream

DESCRIPTION fixing eyelid base, makes the eyeshadow last longer and intensifies the color of it. Can be used alone to even out any discoloration of the eyelids and highlight the eyebrow arch

STRENGTHS this multifunctional primer is enriched with hydrating and emollient ingredients that stretch the eyelid with a slight lifting effect. Use it as a base for the eyeshadow or as an illuminating eye cream. Perfect base for a smokey eye. Perfume and mineral oil free

HOW TO APPLY with your fingertips or Nee brush n. 4 apply a small amount of product directly on the eyelid and spread evenly with soft movements. Wait until the primer is fully absorbed and dry before applying eyeshadow



EYESHADOW



SUPER STAY EYE EYESHADOW PRIMER 1.4 g

EFFECT modular

TEXTURE creamy and highly blendable

DESCRIPTION practical eyeshadow&primer in stick, moisturizing and flowing texture, natural nuances in shine and matte versions, suitable for all types of skin and perfect for day&night look

STRENGTHS its innovative formula combines eyeshadow and primer, for a long lasting make-up effect, tested up to 24 hours. Waterproof effect. Its easy application makes it the perfect ally for your make up look. Sharpener included in the packaging

APPLICATION spread the eyeshadow directly on the eyelid or alternatively use the eye brush Nee nr. 5/6/7. Super Stay Eye - Eyeshadow Primer can be used alone or combined with the other shades



shining
warm
sand



matte
emperador

EYESHADOW



EYESHADOW MONO 2.5 g

EFFECT natural to intense









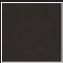
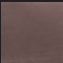
COVERAGE highly pigmented

TEXTURE compressed powder

DESCRIPTION highly pigmented, easy to blend multifunctional eye shadows. These long lasting micronized powders and refined pigments are available in different textures and shades

STRENGTHS compact and pigmented formula. Intense, and easy-to-blend colors. Silky and smooth texture. A small amount of product is sufficient for creating any eye make-up

HOW TO APPLY apply the eyeshadow using Nee eye brushes n. 5/6/7/8. To create an intense look use a light eyeshadow on the moving eyelid and a darker color on the outer corner of the eye and in the crease

SHINING															
	E83 shining black	E22 fango dark shimmer	E70 bran	E20 deep brown shimmer	E21 fango shimmer	E73 cipria shimmer	E71 pastel	E72 white	E91 pastel blue shimmer	E43 holly green	E41 mr. pino	E42 olive green	E40 green banana	E77 light orchid	E78 festival fuxia
MATTE															
	M76 matte black	M86 dark brown	M87 espresso chocolate	M85 nude ivory	M88 nude camel	M53 shell coral	M52 coral rose	M89 silky queen blue	M93 tapestry	M92 matte diva blue	M51 violet ice	M50 sangria			

EYESHADOW



EYESHADOW MONO METALLIC METALLIC VIBRATION 2.5 g

EFFECT modular

TEXTURE highly blendable, metallic finish, long lasting

DESCRIPTION pigmented eye shadow, adds color and intensity to the gaze, giving off a vibrant metallic reflection

STRENGTH extremely silky and velvety texture, enriched with vitamin E and antioxidant principles. intense color, easy to blend. Long lasting effect. Texture wet & dry, it can be applied dry for a more natural result, or wet for a more intense effect. When used wet gives has an eyeliner effect with metallic finish

HOW TO APPLY apply the eyeshadow using the eye brush n. 6/7/8. Proceed with the gradient using Nee brush nr. 5/55/66. To increase the writing moisten the brush with a small amount of water and distribute the product on the entire eyelid



E23
metallic
vibration



EYESHADOW MONO METALLIC BLUE MOON 2 g

EFFECT adjustable

TEXTURE metallic and slightly pearled. Highly blendable and extremely adherent

DESCRIPTION wet and dry eyeshadow powder, gives to the gaze color and intensity, releasing a vibrant metal reflection and slightly pearly

STRENGTHS silky, velvety texture, stretches evenly, blends with extreme ease and has an impeccable effect from morning to evening. Long lasting effect

SELLING POINT the nuance, an intense and deep blue, combined with the brightness of the formula, creates a sexy & sophisticated look

HOW TO APPLY apply Eyeshadow by Using Eye Brush n. 6/7/8. Proceed with the blending using Nee brush nr. 5/55/66. Wet & dry texture, can be applied dry, for a more natural result or wet, for a more intense and writing effect. If used wet gives an eyeliner effect from the metallic finish



E24
blue moon

EYESHADOW



EYESHADOW DUO 2 x 1.20 g

EFFECT natural to intense

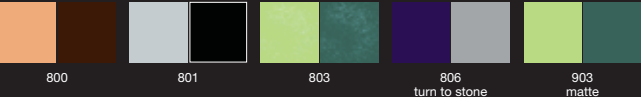
FINISH a beautiful silky matte finish

DESCRIPTION highly pigmented duo eyeshadow in versatile shades that allows creation of the most natural to the most sophisticated looks. Light silky texture for easy blending

STRENGTHS product enriched with Vitamin E, with hydrating and anti-aging properties. Highly pigmented and silky texture

SELLING POINT eyeshadow duo with complementary colors. Create different styles of looks with one single product. Easy to apply and extremely easy to blend

HOW TO APPLY apply the eyeshadows with the little brush included in the pack or with one of the Nee professional eye brushes n. 5, 7 or 8. Use the colors alone or together according to the desired end result



EYESHADOW TRIO 3 x 0.9 g

EFFECT natural to intense

COVERAGE highly pigmented

TEXTURE matte and velvet compressed powders

DESCRIPTION long lasting, silky and light eyeshadow trio. Easy to apply and blend, perfect to create different looks, from natural to dramatic as desired

SELLING POINT eyeshadow trio with coordinated long lasting enriched with Vitamin E and especially chosen colors to create different looks with one product. Packaging with double applicator to use either dry or wet (for a more intense effect)

HOW TO APPLY use Nee eye brushes n. 5/7/8 and apply with subtlety and a soft touch. Use the magic of highlight and shape with the lighter and darker colours



EYESHADOW



EYESHADOW COTTO 2.5 g

EFFECT natural radiant effect and deep smokey effect

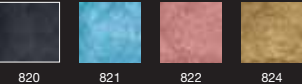
COVERAGE highly pigmented with a transparent touch

TEXTURE crushed compact pearls

DESCRIPTION innovative baked wet&dry formulated eyeshadow. Apply dry for a natural and soft effect and Wet for to create a more intense color

STRENGTHS highly pigmented baked formula, for a professional performance which makes it easier to blend. Contains real pearls extracts. The lighter colors leave a touch of light on the eyes while the darker colors are the perfect base for a smokey eye

HOW TO APPLY use Nee brush n. 5/6/7/8. To have a brighter more intense and radiant result, wet the brush before dipping in the eyeshadow. Create a metallic finish with the eyeliner brush n. 1



MINI EYESHADOW COTTO 0.5 g

EFFECT natural radiant effect and deep smokey effect

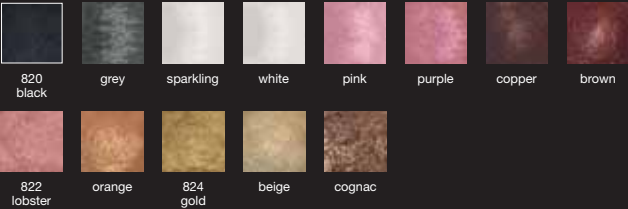
COVERAGE highly pigmented with a transparent touch

TEXTURE crushed compact pearls

DESCRIPTION innovative baked wet&dry formulated eyeshadow. Apply dry for a natural and soft effect and Wet for to create a more intense color

STRENGTHS highly pigmented baked formula, for a professional performance which makes it easier to blend. Contains real pearls extracts. The lighter colors leave a touch of light on the eyes while the darker colors are the perfect base for a smokey eye

HOW TO APPLY follow the same instructions as per eyeshadow cotto



EYESHADOW



TROUSSE EYESHADOW COTTI 4 x 0.5 g

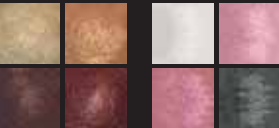
EFFECT natural radiant effect and deep smokey effect

COVERAGE highly pigmented with a transparent touch

TEXTURE crushed compact pearls

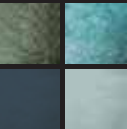
DESCRIPTION innovative baked wet&dry formulated eyeshadow. Apply dry for a natural and soft effect and wet for to create a more intense color

STRENGHTS highly pigmented baked formula, for a professional performance which makes it easier to blend. The lighter colors leave a touch of light on the eyes while the darker colors are the perfect base for a smokey eye. The four colours are perfectly coordinated to create multiple looks



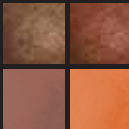
840

842



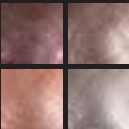
843

costa smeralda



844

terra di siena



845

soft



EYESHADOW SHIMMER STRIPS 10 g

EFFECT modular

TEXTURE pigmented and highly blendable

DESCRIPTION couture palette that consists of five elegant multicolored stripes in the shades of pink, nude and beige

STRENGTHS silky and smooth texture. compact and highly pigmented formula. ultra shining effect for the five eyeshadows that help you to achieve different looks. silky texture, easy to blend and modulated effect

HOW TO APPLY apply the eyeshadow using the appropriate Nee brushes for eyes nr. 5/7/8. The shades can be used both individually or mixing the colours for different makeup effects



1

rose

EYESHADOW



STAY CREAM EYESHADOW 3 g

EFFECT adjustable

TEXTURE metallic and silky

DESCRIPTION eyeshadow in bright and intense shades, highly blendable. embrace your gaze with a monochrome veil or play with overlays creating infinite blendings. The result is a long-lasting water-resistant eye make-up.

STRENGTHS extremely silky and creamy texture, enriched with vitamin A and E that help decrease the depth of wrinkles. Waterproof effect.

Various application ways, can be used as the basis of the entire eyelid or as eyeliner from the metallic finish. Its most special packaging in glass with nee make up logo should be closed thoroughly after each use, to preserve at its best the tenderness of the product.

HOW TO APPLY apply the product by tapping lightly with the flat side of the brush without digging.

- *use as an eyeliner:* draw a line on the upper eyelid from the inside-out, by gripping the brush perpendicular to the eyelid. Turn the tip of the brush towards the inner corner, with the rounded side close to the base of the lashes. For the lower eyelid, start from the outside toward the inside. The tip of the brush should be directed to the outer corner of the eye

- *use to cover the entire eyelid:* apply uniformly on the upper eyelid with the rounded brush upwards, from the inside-outwards and then from the outside-inwards



CE1
espresso



CE2
cocoa sun



CE3
obsession

EYESHADOW



LONG LASTING SMOKEY EYES 1.85 g

EFFECT modular

TEXTURE creamy and highly blendable

DESCRIPTION practical eyeshadow in sticks. Silky and soft texture, extremely easy to apply and blend. Bright finish. Long lasting effect

STRENGHT formula enriched with vitamin E, with moisturizing and anti-aging effect and reflective pearls for an elegant shine effect

SELLING POINT sensorial application due to its velvety texture and extremely quick to blend. Practical and ergonomic packaging

APPLICATION the eyeshadow can be applied directly on the eye or alternatively using the Nee eye brush n. 5/6/7



black



INCREDIBLE EYE ENLIGHTENING GEL 4 g

SKIN TYPE all types of skin

TEXTURE adherent and light texture

DESCRIPTION innovative illuminating treatment enriched with micronized pearls to give splendor to the eyelids. Its light and adherent texture allows a sophisticated and long lasting look

STRENGHTS its comfortable and sensorial texture, flows and is blended easily. Very long lasting

SELLING POINT multitasking product, perfect for your day and evening make up look. Suitable for every skin type

APPLICATION gently apply on the eyelids directly with the fingertip, tapping with the fingers. Just a small dose needed for the day, to emphasize the look. Increase the amount to get an incomparable gleaming look, ideal for an evening make up



PENCIL



SUPER STAY EYE KAJAL BLACK 24H 1.2 g

EFFECT soft and blending line

FINISH intense black

DESCRIPTION deep black color to intensify and enhance the look. Its soft and delicate mine flows with extreme ease for precise and perfect line

STRENGTHS writing and sliding texture. Waterproof effect. Guaranteed resistance tested up to 24 hours. Emphasizes the look with precision, guaranteeing a full and uniform color. Long lasting formula

APPLICATION draw a line along the upper and/or lowest ciliate rime. Blend according to the desired final effect using the Nee eye brush n. 5 or 6



black



EYE PENCIL 1.8 g

EFFECT defined eye contours

FINISH matte

COVERAGE medium to high

TEXTURE firm compact cream

DESCRIPTION ideal eye pencil to emphasize the contours of the eyes, add a touch of depth to any eye make-up or blend directly on the eyelid for a more smokey look

STRENGTHS highly pigmented eye pencils in different colours. Easy to draw a line and easy to blend

HOW TO APPLY always draw a line from the inner corner outwards (for non professionals draw a line in little parts). Leave it like an eyeliner or blend with Nee brush n. 3 or n. 4 for a more natural look. Never draw a line with a just sharpened pencil, soften it after sharpening on the back of your hand



11



13



14



21



24

PENCIL



KAJAL 1.8 g

EFFECT intense and smokey

FINISH satin shine

COVERAGE high

TEXTURE creamy

DESCRIPTION this easy to blend pencil is as deep and intense a colour can get. This is the pencil for that perfect smokey eye

STRENGHTS this Oftalmologist tested pencil with it's professional formula guarantees the most intense colour. Perfect to blend with the special attached applicator and perfect to draw a line on the inner rim of the eye

HOW TO APPLY draw a line around the contours of the eyes and blend with the special applicator or with Nee brush n. 3 or n. 4



KOHL 0.8 g

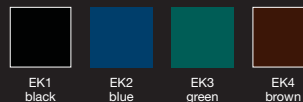
EFFECT precise and defined lines

FINISH intense, matte color

DESCRIPTION ultra-waterproof, 24-hour long lasting texture, dermatologically approved. Soft and flawless application, easy to blend

STRENGHTS extremely delicate and comfortable formula. Ultimate-stay-complex: last generation patented ingredients for incredible long lasting. Practical mini size. Intense black color, perfect for a smokey eye make-up. It is advised to perfectly close its cap to avoid the loss of some ingredient compounds

HOW TO APPLY always sharpen the pencil to obtain a defined point that grants a precise line. Draw a line with nee make up mini khol on the upper and lower lash lines. Blend using nee eye brushes n. 5/6 to obtain the desired result



EYELINER



BOLD COLOR WATERPROOF EYELINER 1.7 ml

EFFECT the perfect eyeliner for any kind of look.. from natural to glamorous

FINISH Intense black and high coverage

TEXTURE liquid

DESCRIPTION perfect result, easy texture that flows perfectly on the skin. The special applicator allows to use the right amount of pigment for a quick and easy application

STRENGTHS dries fast and waterproof.
For impeccable long lasting results

HOW TO APPLY draw a line along the eyelid, starting from the inner corner of the eye to the outer corner. Draw a fuller line for a more intense look



B1
black



B2
cognac



EYELINER CREAM 3 g

EFFECT precise and modular trait

FINISH deep black and mat

DESCRIPTION eyeliner cream, perfect result, precise and modular lines. Intense and opaque black to enhance the gaze. Defines and enhances the shape of the eye

STRENGTHS creamy and soft texture, ultra-pigmented, for a simple and precise application

SELLING POINT the special brush is included in the pack for an immediate application

APPLICATION for a natural make-up effect: draw a thin line along the upper lash line, starting from the inner corner of the eye towards the outer corner. For long lasting effect, we recommend applying Nee Make Up Radiant Eye Primer or Super Stay Eye Eyeshadow Primer in Matte Emperador shade. For a more intense make-up: draw a thin line starting from the inner corner of the eye and intensify it towards the outer corner



black

MASCARA



MASCARA EXTRA VOLUME VITAMIN B5 8 ml

EFFECT thicker healthier lashes

COVERAGE medium to high

FINISH shiny

TEXTURE liquid cream

DESCRIPTION extra volume mascara enriched with vitamin B5

STRENGTHS this volumizing mascara is enriched with vitamin B5, proven to strengthen the eyelashes and to protect them. Besides the volume, the lashes are looking healthy and shiny

HOW TO APPLY use Nee brush n.0 to comb the eyelashes, then gently apply the mascara, always from the root to the end of the lashes. Start with the lower lashes. Always layer mascara with thin layers, the more layers the more intense the result



black



HIGH DEFINITION MASCARA 9 ml

EFFECT defined seperated lashes

COVERAGE medium to high

FINISH matte

TEXTURE liquid cream

DESCRIPTION mascara with exceptionally light texture that stays flexible. Lashes are defined and separated and have more volume and curl

STRENGTHS most natural of the mascara family. Light formula for the perfect lashes. Smudge free and flexible

HOW TO APPLY use Nee brush n. 0 to comb the eyelashes, then gently apply the mascara, always from the root to the end of the lashes. Start with the lower lashes. Always layer mascara with thin layers, the more layers the more intense the result



black

MASCARA



FULL BLACK DIVINE MASCARA 8 ml

EFFECT lengthening & volumizing mascara

FINISH creamy and enveloping

TEXTURE liquid cream

DESCRIPTION never-ending eyelashes, high definition effect. Exclusive formula studied to extent and curve the eyelashes intensifying the look, for deep and magnetic results

STRENGTHS creamy texture, easy to apply, wraps the lashes completely, leaving them glossy and voluminous. Intense color. The special applicator makes the difference: the shortest section extents and defines, the longest one combs the eyelashes while shaping them

HOW TO APPLY it is recommended to comb the eyelashes with the Nee brush n.0 before applying the product. Gently apply the mascara, always from the root to the end of the lashes. Start with the upper lashes and then apply on the lower ones



black



DEEP EXTENSION MASCARA 9 ml

EFFECT longer healthy looking lashes

COVERAGE high

FINISH shiny

TEXTURE liquid cream

DESCRIPTION the perfect lengthening mascara. The special silicon brush gives length to the smallest lashes with adding a touch of curl

STRENGTHS this innovative mascara comes with a silicon brush that perfectly separates the lashes. Enriched with carbon black pigment for an intense black color. Besides giving length, this mascara also gives volume and some curl and stays flexible

HOW TO APPLY use Nee brush n. 0 to comb the eyelashes, then gently apply the mascara, always from the root to the end of the lashes. Start with the lower lashes. Always layer mascara with thin layers, the more layers the more intense the result



deep
black



deep
purple



deep
brown

MASCARA



EXCEPTIONAL & SUPERB MASCARA WATERPROOF 14 ml

EFFECT water resistant, volumizing and lengthening mascara

FINISH creamy and enveloping

DESCRIPTION delicate and enveloping texture. Curls and boosts volume to your eyelashes for bigger eyes. Also ideal for the most sensitive eyes or contact lens wearers

STRENGTHS thanks to the water-resistant formula, it ensures a long-lasting duration. Tears and sweat will no longer be a problem. Curls and volumizes eyelashes, leaving them soft and elastic. The ergonomic brush favours the coating, and it is smudge - proof

HOW TO APPLY apply from base to tip with a 45° angle, first on the upper lashes and then on the bottom ones



black

blue



ICONIC LASHES MASCARA 13 ml

EFFECT extra volume mascara

FINISH creamy and enveloping

DESCRIPTION extensive, deep mascara, with black microfiber sculpting the gaze, for extreme long and voluminous eyelashes, extension effect

STRENGTHS its flexible formula, envelops and protects the eyelashes, leaving them soft and flexible even when the mascara is dry, without any smudging

SELLING POINT with only one application, captures every single eyelash, for a homogeneous distribution of the mascara. Even for the shortest or hardest to reach eyelashes, they appear immediately longer and thicker

HOW TO APPLY starting from the attachment of the lashes at an angle of 45°, proceeding to the lengths, first on the upper eyelashes and then on the lower lashes. Proceed with a second application for an extreme eyelash effect



black

MASCARA



PERFECT ME MAKE UP REMOVER 5 ml

EFFECT perfectly cleansed, beautiful eyelashes

FINISH fluid

DESCRIPTION it is everything a woman wants from a makeup remover: practical, easy, fast. Correcting small excesses of mascara or smears, has never been so simple

STRENGTHS fast and effective cleansing. Gentle Make-up remover, lifts away every traces of mascara excess or smudges from the eyelids. Ophthalmologist tested, practical and easy to use, it is an indispensable ally of every woman. The ergonomic applicator allows maximum precision and perfect results

HOW TO APPLY using the applicator pass directly on the mascara stain. Dry with a cotton swab



HUG MASK MASCARA 4.5 ml

EFFECT cleansing and moisturizing treatment for eyelashes

FINISH creamy and light

DESCRIPTION hug mask mascara, made from black clay. It nourishes, purifies and strengthens the eyelashes from the first application. A pure relaxing pampering for your lashes

STRENGTHS Formula enriched with black clay which absorbs impurities and toxins, and infused with the combination of a precious African plant and a marine polysaccharide which protect against pollution. It is an innovative beauty and health treatment for your lashes. The ergonomic and easy to use brush, favours a uniform and fast application of product.

HOW TO APPLY Apply on the eyelashes and leave in for around 2 min allowing the mask to absorb all the traces of impurities. Gently remove with lukewarm water. Treatment is advised once a week

MASCARA



SMOKEY EYES MASCARA 4.5 ml

EFFECT volumizing mascara

FINISH creamy and enveloping

DESCRIPTION lengthens, defines, thickens. The lashes rediscover an exaggerated volume, for a deep and intense make-up result

STRENGHT texture of quick-drying, long-lasting. Enriched with three different types of beeswax that give greater volume eyelashes, making them naturally more dense and thick

SELLING POINT the ergonomic brush with its wraparound bristles guarantees a perfect distribution of the product on the eyelashes and the maximum volume

APPLICATION applying mascara starting from the lower lash line with a 45° angle proceeding to the lengths, first on the upper lashes and then on the lower ones. To obtain a more intense and deep look, proceed with a second application



black



DNA MASCARA CURL & VOLUME 12 ml

EFFECT extra volume

FINISH fluid and wrapping

DESCRIPTION deeply intense mascara. Extra black allure for a magnetic black effect that intensifies the look. The eyelashes are multiplied and intensified, enveloped in a deep color. Immediate result

STRENGHTS its DNA texture, with a super natural effect, delicately and precisely wraps the lashes for an immediate and defined extra volume effect, combined with an exceptional curvature. Soft application, zero lumps, zero smudges

SELLING POINT the volume effect intensifies with each application. Exceptional curvature. The innovative applicator wraps the eyelashes, even the smallest, with an incredible delicacy

APPLICATION before applying the product it is advisable to comb the eyelashes with the Nee comb n.0. Proceed applying the mascara starting from the attachment and proceeding up to the lengths, first on the upper eyelashes and then on the lower ones



black

EYEBROW



EYEBROW KIT 1.5 ml

EFFECT defined, elegant and perfectly shaped eyebrows

FINISH a subtle semi matte finish

DESCRIPTION the elegant and refined eyebrow kit includes all that is necessary to emphasize, shape and define your eyebrows... close to perfection!

STRENGTHS comforting wax texture for very easy application. Available in two essential colors

SELLING POINT also included are all the essential accessories to create that perfect eyebrow: comb-brush, angular brush and mirror

HOW TO APPLY comb your eyebrows with the comb-brush upwards. Dip the angular brush in the desired color and fill up the empty spaces or define the upper line of the eyebrows



EYEBROW PENCIL 1.8 g

EFFECT natural but defined looking eyebrows

COVERAGE low to medium

FINISH matte

DESCRIPTION hard baked pencils that perfectly shape the eyebrows.

STRENGTHS easy to apply, giving just a touch of colour. The eyebrow pencils come in three carefully picked colours. 'Brow brush' included

HOW TO APPLY always sharpen the pencil before use. Comb the hairs down with the brush, then draw in thin hair lines at the base of the brow. Draw a line over the upper hairline of the brow and comb the hairs back up (over the just drawn line). Now optionally blend the line with brush n. 2



EYEBROW



EYEBROW MARKER 2 g EYEBROW SHIMMER 2 g

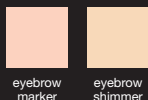
EFFECT soft and easy-to-blend line

FINISH matte or shiny

DESCRIPTION enlightening eyeshadow pencil, available in shimmer & matte versions. It highlights the eyebrow arch, giving it a silky, full effect, perfect for the night, or a matte effect, perfect for a day makeup

STRENGTHS delicate formula, soft and easy-to-blend texture. Ergonomic packaging. Easy to use thanks to the special mini blender that is perfect for applying the product

HOW TO APPLY apply the product under the eyebrow arch and blend it. Nee Make Up recommends to apply a touch of Eyebrow Marker also above the eyebrow arch in order to give more appeal to your look



COLORLED BROW MASCARA 4 ml

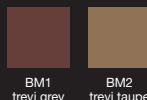
EFFECT defined, perfect eyebrows

FINISH intense color

DESCRIPTION eyebrow mascara, colors, combs and fixes, for perfectly defined and full eyebrows

STRENGTHS extremely easy-to-apply texture, leaves a color film that defines and thickens the eyebrow. Available in two shades in order to choose the most suitable color to the skin complexion. Packaging with ergonomic applicator, that allows to use the correct amount of pigment

HOW TO APPLY apply Colored Brow Mascara with a vertical movement, from the bottom to the top. The eyebrow gets color and definition. For a more intense effect, repeat the application. It can be used alone or after applying Eyebrow Pencil



EYEBROW



GEL PROFESSIONAL EYELASHES & EYEBROWS 8 ml

EFFECT shiny, powder free eyebrows.

COVERAGE transparent

FINISH shiny

TEXTURE liquid gel

DESCRIPTION transparent hydrating and strengthening mascara gel

STRENGTHS sticky free gel mascara. Fixates the hair of the eyebrows and they will stay in place the whole day. Perfect after defining the eyebrows or to remove powder from the lashes or the eyebrows. Perfect for man because of it's transparent finish

HOW TO APPLY first comb the eyebrows and eyelashes using the included brush and then apply the mascara gel from bottom to top in a vertical way



transparent

LIPS

CARE

TRANSPARENT LIPSTICK

CREAM LIPSTICK

MATTE LIPSTICK

BB LIPSTICK/REPAIRE

FLUID LIPSTICK

CLEAR/TRANSPARENT GLOSS

VINYL GLOSS

PENCIL

MATCH YOUR COLOR



LIP SCRUB 4 ml

EFFECT exfoliating

TEXTURE soft and delicate

DESCRIPTION exfoliating lip balm that eliminates the dead skin leaving your lips soft, hydrated and elastic

STRENGHTS texture enriched with aloe, shea butter to keep the natural elasticity of lips, vitamin E and jojoba oil for an intense anti-age effect. Easy to use, immediate result, extreme softness. Must-have product that women in the world use before catwalks to exalt the beauty of their lips and make-up

HOW TO APPLY take some product and massage on the lips with circular movements. Dry with a tissue



LIP BALM 4 ml

EFFECT super moisturizing & matte

TEXTURE delicate and enveloping

DESCRIPTION super moisturizing balm. Deeply nourishes and leaves the lips soft, velvety and elastic. Matte effect, ideal also for man

STRENGHTS delicate and restructuring texture, enriched with 100%pure Murumuro butter. Rich in vitamin A, antioxidant and emollient action, vitamin F and linoleic acid, that help to create a protective barrier and prevent the loss of water and dehydration immediate moisturizing effect. Functional packaging

HOW TO APPLY withdraw the product and massage gently on the lips with gentle circular motions until complete absorption

TRANSPARENT LIPSTICK



TRANSPARENT LIPSTICK 3.2 ml

COVERAGE transparent

FINISH glossy

DESCRIPTION transparent coloured lipstick that is extremely moisturizing with volumizing and smoothing results

STRENGTHS transparent glossy lipstick enriched with moisturizing ingredients. The advantage of a lipstick and the results of a gloss. Use it on its own or over any lipstick. Very easy to 'touch-up'

HOW TO APPLY apply the lipstick directly without a lip brush or use Nee lip brush n. 3 for a smoother and more precise effect. Apply on its own or over any other lipstick



147
glow



149
cherry



153
geranio

CREAM LIPSTICK



CREAM LIPSTICK 3.4 g

COVERAGE high

FINISH creamy

DESCRIPTION creamy lipstick for silky, soft and perfectly smooth lips

STRENGTHS this easy to apply lipstick is soft and creamy with a formula that is enriched with moisturizing ingredients. The ideal lipstick for any occasion, including that perfect 'bride' look

HOW TO APPLY apply the lipstick directly without a lip brush or use Nee lip brush n. 3 for a smoother and more precise effect. It is advised to define the shape of the lip with a matching lip pencil before applying the lipstick



146
nude

141
beige
rosé

144
stay



CREAM LIPSTICK 4.3 ml

COVERAGE high

FINISH creamy-satinated matte

DESCRIPTION flawless semi-long lasting satinated, flexible and moisturizing texture

STRENGTHS enriched with moisturizing ingredients this lipstick comes in three trendy colours that are a fit for any occasion. Flawless finish and highly pigmented trendy colours fit for any occasion and skin tone

HOW TO APPLY apply the lipstick directly without a lip brush or use Nee lip brush n. 3 for a smoother and more precise effect. It is advised to define the shape of the lip with a matching lip pencil before applying the lipstick



105
slate
rose

150
natural
chic

152
analogue
pink

151
plastic
orange

104
paprika

132
tigerlily

133
zia rose

CREAM LIPSTICK



LIPSTICK HYDRATING 4 ml

COVERAGE medium to high

FINISH creamy

DESCRIPTION lipstick with moisturizing and anti-aging ingredients. Ultra fluid and silky nourishing texture. Wide range of available colours

STRENGTHS texture enriched with vitamin E, moisturizing and anti-aging. Easy to apply with long lasting effects

HOW TO APPLY apply the lipstick directly without a lip brush or use Nee lip brush n. 3 for a smoother and more precise effect. It is advised to define the shape of the lip with a matching lip pencil before applying the lipstick



121
salmon
pink

MATTE LIPSTICK



MATTE LIPSTICK 4 ml

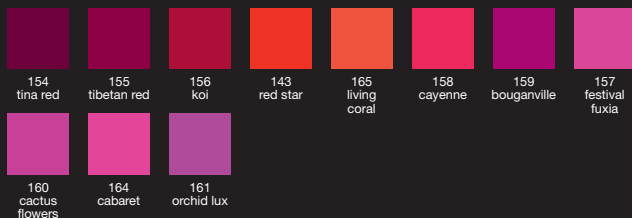
COVERAGE high

FINISH matte

DESCRIPTION lipstick with hydrating, silky and flawless texture. Matte effect, full and pure color

STRENGTHS texture enriched with Vitamin E, moisturizing and anti-aging. Fashionable colors. Easy to apply with long lasting effects

HOW TO APPLY apply Matte Lipstick with a small lip brush. It is advised to open a little bit the mouth for a more precise application. Start from the center of the mouth towards the borders for the upper lip, start from the corners towards the center for the lower lip



SILKY MATT 2.8 g

COVERAGE medium-high

FINISH semi-matte

DESCRIPTION moisturized and irresistibly velvety lips, full color effect. Finish semi-matte. Easy to apply in all circumstances, the lips in a moment are dressed in color and brightness. Nourishing and protective texture, comfortable long-lasting formula.

STRENGTHS creamy and moisturizing texture. Intense color, remains unchanged throughout the day, without smudging. Sensual and irresistible lips

SELLING POINT ideal to always carry with you. Creamy texture for an easy application in all circumstances

APPLICATION apply directly on the lips, starting from the center of the mouth towards the sides for the upper lip and from the corners reaching the center for the lower lip. Before applying, define the lip contour with a pencil of shades similar to that of the your lipstick



BB LIPSTICK/REPAIRE



BB LIPSTICK 4.5 ml

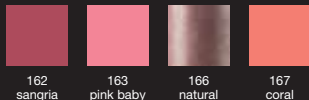
COVERAGE medium to high

FINISH semi-transparent

DESCRIPTION nourishes, moisturizes, embellishes, plumping and protects. All-in-one! the texture flows perfectly on the lips for an extra shiny result

STRENGTHS enriched with natural butter and signaline s (botanical cellular activator) for nourished and moisturized lips, intense and extra volume results

HOW TO APPLY apply directly or with nee lips pencil n.3 and then blend. Define the lip contour with a lip pencil using a similar colour



162
sangria

163
pink baby

166
natural

167
coral



BB BALM 4.5 ml

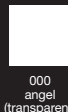
COVERAGE light and glossy

FINISH transparent

DESCRIPTION moisturizing and soothing balm. Outright lights up and protects your lips for hours

STRENGTHS formula enriched with pure restoring murumuru butter. Perfect for any occasion, essential to protect the lips from cold and wind throughout the winter season

HOW TO APPLY apply directly with the stick and massage on the lips



000
angel
(transparent)

BB LIPSTICK/REPAIRE



LIP REPAIRE 3.4 g

COVERAGE modular

FINISH semi-transparent

DESCRIPTION lip balm soft, velvety and repairer. Moisturizes, fleshing out and protecting your lips. Releases a bright color veil to complete the look

STRENGTHS highly emollient and moisturizing formula thanks to the mix of butters including shea butter. Complete the texture Vitamin A & E and the mandarin and rose plant extract. One product that combines maximum hydration and a bright, semi-transparent color, ideal for both the day and the evening. Great as an emollient during the day when using The Lipstick

HOW TO APPLY apply lipstick directly with the stick or with lip brush Nee 3 blending carefully. Before application it is recommended to define the lip contour with Miracle Lip Pencil or Passpartout Lip Pencil



333
deep teak



334
brown

FLUID LIPSTICK



THE LIPSTICK MATTE & FLUID 5.5 ml

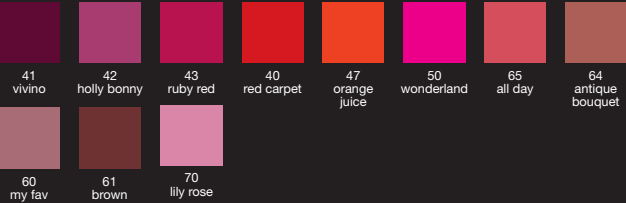
COVERAGE high

FINISH matte

DESCRIPTION no more compromises for your lips with THE LIPSTICK: extraordinary liquid lipstick, extreme color and coverage, super long lasting results. From now on you can get all this with one simple gesture

STRENGHTS creamy, water based formula, can be applied easily and hydrates the lips, keeping the color for long. Extreme color. Impeccable lips for hours

HOW TO APPLY define the lip contour with Miracle Lip Pencil and proceed with the application of the liquid lipstick directly with the applicator in the pack. Start from the center to the sides on the upper lip and from the sides to the center on the lower lip



THE LIPSTICK SHINE & FLUID 5.5 ml

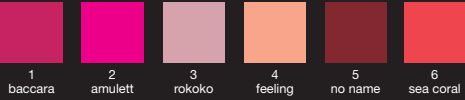
COVERAGE medium

FINISH shiny

DESCRIPTION glossy long lasting and lightweight liquid lipstick. Color and glisten that blend perfectly on the lips, for a fresh and light make up, extreme hold and exceptional comfort

STRENGHTS creamy formula water based, enriched with a mix of butters including mango, for a nourishing, anti-aging and smoothing effect. combines hydration and shine. Flawless lips and perfect for hours

HOW TO APPLY define the lip contour with Miracle Lip Pencil and apply the liquid lipstick with the applicator in the pack. Start from the center to the sides on the upper lip and from the sides to the center on the lower lip



CLEAR/TRANSPARENT GLOSS



SHINE & CARE LIP 2.8 g

COVERAGE modular

FINISH glossed and semi-transparent

DESCRIPTION the indispensable ally for hydrated and glamorous lips. It is applied directly, intense comfort, semi-transparent colored finish. Lips are more voluminous, soft and protected

STRENGTHS creamy and moisturizing texture for an intense and luminous color that remains unaltered throughout the day, without smudging. Sensual lips and irresistibly velvety. Ideal to always carry with you. Creamy texture for an application without difficulty, in all circumstances

APPLICATION apply directly on the lips, starting from the center of the mouth towards the sides for the upper lip and from the corners reaching the center for the lower lip. Before applying, define the lip contour with a pencil of shades similar to those of the lipstick



chili
butter



blooming
dahlia



HOLOGRAM LIP 2.8 g

COVERAGE modular

FINISH oleographic and semi-transparent

DESCRIPTION the lips immediately dress with reflections and light never seen before. A surprising twinkle, combined with maximum hydration

STRENGTHS nourishing and creamy texture. Long lasting formula. Instant brilliance. Perfect to be used alone or combined with Shine & Care Lip

APPLICATION apply directly on the lips, starting from the center of the mouth towards the sides for the upper lip and from the corners reaching the center for the lower lip. It can be used alone or on a lipstick to illuminate it with delicate glow



transparent

CLEAR/TRANSPARENT GLOSS



SENSUAL GLOSS 6 ml

COVERAGE transparent

FINISH satinated shine

DESCRIPTION violet based transparent gloss. Leaves a sensual transparent coat on the natural lips

STRENGHTS this special gloss is enriched with moisturizing, smoothing and protective ingredients and has a special brush applicator with marten bristles that helps spread the gloss evenly over the lips. This gloss brings out the beauty of any natural lip colour

HOW TO APPLY rub the gloss directly on lips with the special brush applicator stick



G1



CLEAR SHINE GLOSS 4.5 ml - 3 ml

COVERAGE semi transparent

FINISH shiny

DESCRIPTION volumizing and moisturizing gloss with a touch of fresh colour. The ideal gloss for a natural but fresh look

STRENGHTS enriched with hyaluronic acid and exclusive volumizing ingredients. 'non-sticky' gloss. with a special designed applicator that makes applying this gloss even easier then ever before

HOW TO APPLY rub the gloss directly on lips with the special flocked brush applicator stick or with the Nee lip brush n. 3, if applied over a lipstick



CS1
dreampop



CS4
sangria



CS5
nude



sparkling
grey

VINYL GLOSS



GLOSSY LIPS 7 ml

COVERAGE light and semi-transparent

FINISH bright

DESCRIPTION a touch of color and maximum comfort for this irresistible, ultra-bright and moisturizing lip gloss. Volume effect at most

STRENGTHS enriched with a high nourishing effect oils, in addition to vitamins C and natural antioxidants, to keep the lips elastic and smooth. Its soft consistency blends perfectly on the lips, without sticking, for a make up result of great effect, immediate volume and extraordinary shine

APPLICATION spread the gloss directly on bared lips using the practical applicator incorporated in the packaging



sea coral
holo

070
glitter



BRIGHTNESS GLOSS 5.5 ml

COVERAGE medium

FINISH sparkly shiny

DESCRIPTION ultra shiny gloss with a creamy and extra adherent texture. Enriched with a high percentage of real pearl extracts for extra volume and shine

STRENGTHS special formula that contains a SPF 15 filter. It's super shine and crushed pearl sparkle gives volume to the lips while protecting and moisturizing

HOW TO APPLY rub the gloss directly on lips with the special brush applicator stick



R1
strawberry

R2
pink

VINYL GLOSS



FILLER NATURAL GLOSS 5.5 ml

COVERAGE medium

FINISH ultra creamy and super shiny

DESCRIPTION semi-transparent volumizing gloss with a mirror-like finish

STRENGTHS formula enriched with volumizing fillers. The special mirror-like ultra-shining texture exalts and increases the natural volume of your lips. Healthy, flexible and full lips

HOW TO APPLY rub the gloss directly on lips with the special brush applicator stick. Matches Nee pencil n. 269 for sensual shaped up lips



F1



STAY GLOSS 5.5 ml

COVERAGE medium

FINISH shiny

DESCRIPTION UVA and UVB blocking waterproof gloss

STRENGTHS this waterproof gloss has a beautiful shiny finish that will last longer than any other gloss. The protecting filters make it perfect for the beach

HOW TO APPLY rub the gloss directly on lips with the special brush applicator stick



F2

PENCIL



LIP PENCIL 1.8 g

EFFECT perfectly defined lips

FINISH matte

DESCRIPTION defining lip pencil with skin-tight texture that effortlessly shapes the lip

STRENGHTS classic lip pencil that is easy to use and that is smudge free

HOW TO APPLY start from the center of your upper lip moving across each side. Repeat the same steps for your lower lip. Blend the lip line for volumizing effect. Add loose powder and draw again for longer lasting effects



HIGH DEFINITION LIP PENCIL 1.08 g

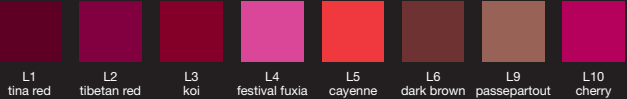
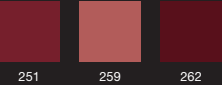
EFFECT perfectly, long lasting defined lips

FINISH matte

DESCRIPTION new “color bold” formula with a texture that grants long lasting full color and perfectly shaped lips

STRENGHTS waterproof texture enriched with natural anti-oxidants. Easy to use and smudge free. In the packaging a small blending brush and sharpener are included

HOW TO APPLY apply the lip pencil on the border or, if you prefer, all over the lips. The use of a lip pencil grants a longer lasting effect of the lipstick



PENCIL



MIRACLE LIP PENCIL 1.2 g

EFFECT long lasting perfect result

FINISH transparent

DESCRIPTION transparent and invisible Lip pencil.
Perfectly shapes the lip contour without leaving any trace.
Gives volumen and prevents wrinkles

STRENGTHS mudge-free lipstick enriched with hyaluronic acid,
ceramid and vegetal filling spheres. Apply before gloss or lipstick for
smudge free and perfect lips















HOW TO APPLY apply on the lip contour or on the whole lips area.
The lip pencil guarantees long lasting results



transparent

MATCH YOUR COLOR

LIP PENCIL

	262 Lip Pencil		105 Cream - slate rose
	259 Lip Pencil		121 Hydrating - salmon pink
	259 Lip Pencil		146 Cream - nude
	251 Lip Pencil		147 Transparent - glow
	251 Lip Pencil		150 Cream - natural chic
 	251 - 259 Lip Pencil		165 Matte - living coral
	L1 High Def. - tina red		154 Matte - tina red
	L2 High Def. - tibetan red		155 Matte - tibetan red
	L3 High Def. - koi		156 Matte - koi
	L5 High Def. - cayenne		158 Matte - cayenne
	L1 High Def. - tina red		159 Matte - bouganville
	L4 High Def. - festival fuxia		161 Matte - orchid lux


LIPSTICK





	L4 High Def. - festival fuxia		160 Matte - cactus flowers
	L4 High Def. - festival fuxia		157 Matte - festival fuxia
	L4 High Def. - festival fuxia		164 Matte - cabaret
	MIRACLE Lip Pencil		162 BB - sangria
	L9 High Def. passepartout		163 BB - pink baby
	L9 High Def. passepartout		166 BB - natural
	L9 High Def. passepartout		167 BB - coral


MATCH YOUR COLOR


LIP PENCIL


 **L6**
High Def. - dark brown


 **L6**
High Def. - dark brown


 **L6**
High Def. - dark brown

 **L6**
High Def. - dark brown


 **L6**
High Def. - dark brown

 **L6**
High Def. - dark brown


 **L10**
High Def. - cherry

 **L10**
High Def. - cherry


 **L10**
High Def. - cherry


 **L10**
High Def. - cherry


 **L10**
High Def. - cherry


 **L1**
High Def. - tina red


LIPSTICK


 **159**
Matte - bouganville


 **160**
Matte - cactus flowers

 **161**
Matte - orchid lux


 **105**
Cream - slate rose


 **133**
Cream - zia rose

 **149**
Transparent - cherry


 **147**
Transparent - glow

 **166**
BB - natural


 **150**
Cream - natural chic


 **333**
Repaire - deep teak


 **334**
Repaire - brown


 **41** vivino
The Lipstick Matte


LIP PENCIL


 **L1**
High Def. - tina red


 **L2**
High Def. - tibetan red


 **L2**
High Def. - tibetan red


 **L3**
High Def. - koi

 **L3**
High Def. - koi


 **L3**
High Def. - koi

 **L4**
High Def. - festival fuxia

 **L4**
High Def. - festival fuxia


 **L4**
High Def. - festival fuxia


 **L5**
High Def. - cayenne


 **L5**
High Def. - cayenne


 **L5**
High Def. - cayenne


LIPSTICK


 **5** no name
The Lipstick Shine


 **43** ruby red
The Lipstick Matte


 **1** baccara
The Lipstick Shine


 **43** ruby red
The Lipstick Matte


 **40** red carpet
The Lipstick Matte


 **333**
Repaire - deep teak


 **50** wonderland
The Lipstick Matte

 **65** all day
The Lipstick Matte

 **2** amulett
The Lipstick Shine

























 **40** red carpet
The Lipstick Matte

 **47** orange juice
The Lipstick Matte

 **43** ruby red
The Lipstick Matte

MATCH YOUR COLOR

LIP PENCIL

 L5 High Def. - cayenne	 2 amulett The Lipstick Shine
 L6 High Def. - dark brown	 61 brown The Lipstick Matte
 L6 High Def. - dark brown	 60 my fav The Lipstick Matte
 L6 High Def. - dark brown	 5 no name The Lipstick Shine
 L6 High Def. - dark brown	 334 Repaire - brown
 L6 High Def. - dark brown	 333 Repaire - deep teak
 L9 High Def. passepartout	 41 vivino The Lipstick Matte
 L9 High Def. passepartout	 42 holly bonny The Lipstick Matte
 L9 High Def. passepartout	 65 all day The Lipstick Matte
 L9 High Def. passepartout	 64 antique bouquet The Lipstick Matte
 L9 High Def. passepartout	 60 my fav The Lipstick Matte
 L9 High Def. passepartout	 61 brown The Lipstick Matte

LIP PENCIL

 L9 High Def. passepartout	 70 lily rose The Lipstick Matte
 L9 High Def. passepartout	 1 baccara The Lipstick Shine
 L9 High Def. passepartout	 3 rokoko The Lipstick Shine
 L9 High Def. passepartout	 4 feeling The Lipstick Shine
 L9 High Def. passepartout	 5 no name The Lipstick Shine
 L9 High Def. passepartout	 333 Repaire - deep teak
 L10 High Def. - cherry	 50 wonderland The Lipstick Matte
 L10 High Def. - cherry	 65 all day The Lipstick Matte
 L10 High Def. - cherry	 42 holly bonny The Lipstick Matte
 L10 High Def. - cherry	 43 ruby red The Lipstick Matte
 L10 High Def. - cherry	 2 amulett The Lipstick Shine
 L10 High Def. - cherry	 1 baccara The Lipstick Shine

SPECIAL PRODUCTS

SPECIAL PRODUCTS



NUDE PALETTE 9 x 0.9 g

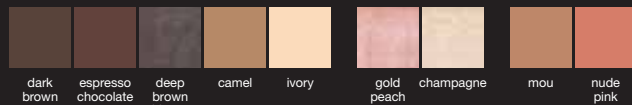
SKIN TYPE all skin types

COVERAGE medium-high

DESCRIPTION sophisticated palette with 7 warm eyeshadow colors: ivory, camel, champagne, gold peach, deep brown shimmer, espresso chocolate, dark brown and 2 shiny, natural lip glosses, mou& nude pink

EFFECT natural effect, innovative formula, matte and shiny textures for a long-lasting performance. Vibrant and glamorous colours, perfect to realize a total nude look and a sophisticated make up that will enhance the beauty and femininity of every woman

HOW TO APPLY use the Brush included in the box



CONTOURING PALETTE

LIGHT / DARK 2 x 5 g / 3 x 3 ml / 1 x 2 g

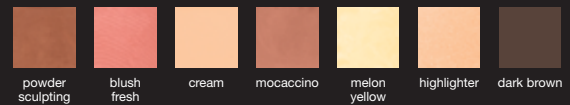
SKIN TYPE all skin types

COVERAGE medium-high

DESCRIPTION magnetic palette designed to create a perfect contouring make up. Contains six different products specific to each preparation step. Powder Sculpting to sculpt facial features, Melon Yellow to minimize imperfections and correct skin tone. The shades Mocaccino Cream and allow to realize the most soft fixes, while Fresh Blush performs the function of blush

STRENGTHS innovative formulations, different textures for perfect contouring make up. Modular effect. Thanks to the technique of contouring the face looks more defined, more sculpted features and enhanced in a few simple gestures. All the necessary tools are enclosed in this fantastic palette

HOW TO APPLY Nee Make Up recommends using Magic Brush made for the perfect contouring makeup



SPECIAL PRODUCTS



TROUSSE ALL OVER 3 x 2.2 g

SKIN TYPE all skin types except very oily

FINISH natural iridescent shine

COVERAGE semi transparent

TEXTURE baked compressed powder

DESCRIPTION three-in-one product, eyeshadow, blush, face and body illuminator. This easy to apply product immediately brights up any make-up and gives that beautiful iridescent shine to face and body

STRENGTHS three-in-one baked formula enriched with rosemary oil, nourishes and protects the skin. This multi-purpose trio is a make-up artists dream product as it's easy to apply, easy to blend and almost impossible to smudge. The perfect illuminator for face and body

HOW TO APPLY apply with brush blush n. 11 on face, body and cleavage



NAILS

NAIL POLISH COLORSHINE
NAIL CARE

NAIL POLISH COLORSHINE



NAIL POLISH COLORSHINE 5 ml - 10 ml




COVERAGE high

FINISH gel like

DESCRIPTION revolutionary nail polish with extreme shine and coverage. The innovative formula guarantees a gel effect finish without the use of UV lights

STRENGTHS extra long lasting formula with high gloss gel effect without the use of UV lights. Easy to apply, extremely shiny and perfect one layer coverage. Self-levelling filler (no ridge filler needed)

HOW TO APPLY for long lasting result (1 week+) apply Sandwich as basecoat, let it dry and proceed with a double nail polish application. Wait until it's completely dry before applying Sandwich again, now as top coat. For a retouch layer of pure shine, apply Shine Up every few days. Wait at least 2 days before using Shine Up over your nailpolish

									
156 lavender	138 orchid lux	115 cactus flowers	103 festival fuxia	104 bouganville	100 jelly pink	114 cabaret	105 rose flambè	101 exposure pink	106 cayenne
									
139 cognac	136 maya chocolate	135 mocaccino	134 summer taupe	131 valentino pearl	133 barbie botox	132 pink tutù	129 milk shake	128 ivory cream	127 rose dust
									
151 tina red	152 tibetan red	153 koi	150 tango red	155 poppy red	159 geranio	102 polarized orange	300 marrakech sunset	301 meloncello	302 goldfinger
									
140 silky queen blue	141 ariel	201 milk mint	200 mr. pino	202 jelly green					

NAIL CARE



SANDWICH - BASE & TOP COAT 5 ml - 10 ml

COVERAGE transparent

FINISH soft shine

DESCRIPTION strengthening 2-in-1 product that can be used both as a Base-and a Top coat

STRENGTHS strengthening and anti-yellowing formula, with oxygen-based actives and special resins that guarantees a professional long-lasting performance of the Colorshine nail polishes. Toluene and formaldehyde-free

HOW TO APPLY use it as a Base and Top coat for the Colorshine nail polishes, or use it on its own for a natural shine and healthy looking nails



400
transparent



SCANDAL 5 ml - 10 ml

COVERAGE transparent with micro glitter

FINISH shiny and easy to use

DESCRIPTION transparent top coat entiched with micro glitter for a delicate iridescent efect. Use either on bare nail or as top coat

STRENGTHS the special formula reinforces the nail and protects the nail polish for a long lasting result. Shiny and multi colour for a shimmering manicure

HOW TO APPLY for a shiny natural look apply on bare nail. For an extra sophisticated look use as top coat for your nail polish colorshine favorite shade. Use only on dry nail polish. For extra shimmering effects apply twice



402
scandal

NAIL CARE



SHINE UP - RENEWAL 5 ml

COVERAGE transparent

FINISH professional ultra high shine

DESCRIPTION ultra glossy and fast drying renewal coat. Nails will look as shiny as they did after a professional manicure

STRENGTHS special resins create a protective shield on the nail polish which protects the colour from fading. Shine Up guarantees perfect looking nails for as long as 10 days (if the base is applied perfectly). Toluene and formaldehyde-free

HOW TO APPLY apply Nee Shine up one/twice a week to guarantee a long-lasting manicure finish. Start with application of Shine Up 2 days after applying Colorshine nailpolish



401
transparent



EXPRESS DRY 10 ml

COVERAGE high

FINISH semi shine

DESCRIPTION formulated for natural nails, this fast drying topcoat speeds up the drying time of your nail color while creating a strong finish, resistant to chipping and peeling

STRENGTHS extra fast drying nails that won't lose any colour and become chip free

HOW TO APPLY wait approximately one minute after application of the nail polish before applying the Basic Fast Dryer



403
express dry

BOXES

BOXES



OBSESSION KIT

IT CONTAINS:

Matte lipstick - High definition lip pencil - Nail polish colorshine
Lip scrub - Pencil sharpener



DO WHAT YOU LOVE BOX

IT CONTAINS:

Cream blush heidi - All-over shimmer fiocco di neve
The lipstick ruby red - Bracelet love



SMOKEY EYES KIT

IT CONTAINS:

Black kohl - Mascara - Mini eyeshadow cotto
Mini eyeshadow cotto sparkling - Mini clear shine gloss - Satin bag



THE SMOKEY EYES

IT CONTAINS:

Long lasting smokey eyes - Smokey eyes mascara
Long lasting eyeliner EY0 moonless black
Bi phase eye make-up remover 20 ml

BOXES



WEDDING DAY MAKE UP BOX

IT CONTAINS:

Face rejuvenating primer - Perfect skin oxygen foundation

Weightless liquid concealer - Loose powder HD

Compact blush B62 - Mini make-up fixer

Eyeshadow shimmer strips - Exceptional & superb mascara

Lip balm - The lipstick matte & fluid nr. 60 my fav

High definition lip pencil L9 passepartout

Sandwich 5 ml - Nail polish colorshine 5 ml nr. 129 milk shake

BRUSHES & ACCESSORIES

FACE BRUSHES

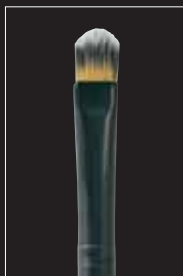
EYE BRUSHES

EYE & LIP BRUSHES

TROUSSE

ACCESSORIES

FACE BRUSHES



CONCEALER BRUSH no. 4

FIBER synthetic

DESCRIPTION concealer brush with aluminium sleeve and wooden handle

STRENGTHS long-life brush with great grip, no hair loss and very easy to use

HOW TO USE besides a concealer brush it is also a perfect eyeshadow brush for Cotti eyeshadows



MAGIC BRUSH nr. 003

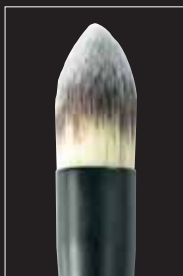
FIBER synthetic

DESCRIPTION Magic Brush ensures flawless application of primer, cream products, foundations and powders all over your face. The special oval shape of this brush allows you to reach all parts of the face providing extraordinary application with a natural result

STRENGTHS soft synthetic bristles ensure optimal performance in terms of collection and distribution of the product. The ergonomic handle ensures precision and stability in the application

HOW TO USE Apply a small amount of product on the back of the hand. Pick the color with the brush and proceed with the application, starting from the center of the face fading towards the sides

FACE BRUSHES



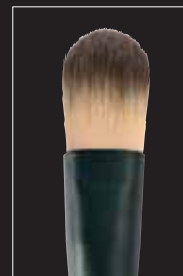
FOUNDATION BRUSH no. 9

FIBER synthetic

DESCRIPTION double fiber brush ideal for applying fluid foundations, with aluminium sleeve and wooden handle

STRENGTHS long-life brush with great grip, no hair loss and very easy to use

HOW TO USE apply a small quantity of product on the back of the hand, dip the brush in the foundation and blend from the hairline towards the centre of the face in subtle strokes



BASIC FOUNDATION BRUSH nr. 39

FIBER synthetic

DESCRIPTION flat brush perfect for the foundation application. Natural and soft bristles, aluminium sleeves and wooden handle

STRENGTHS ideal for applying the foundation. Uniform, professional and perfect result

HOW TO USE pour a small quantity of the foundation on the palm of the hand, take the product with the brush and proceed with the application, starting from the center of the face blending towards the sides

FACE BRUSHES



HIGH DEFINITION FOUNDATION BRUSH nr. 40

FIBER synthetic

DESCRIPTION flat brush, bias-cut tip, perfect for the foundation application. Natural bristles, aluminium sleeves and wooden handle

STRENGTHS ideal for applying the foundation even in the difficult face angles and perfectly concealing the expressions lines

HOW TO USE pour a small quantity of the foundation on the palm of the hand, take the product with the flat part of the brush and apply on the face with steady and continuous movements



DUO FIBER BRUSH no. 10

FIBER synthetic

DESCRIPTION foundation brush for cream foundations. With aluminium sleeve and wooden handle

STRENGTHS long-life brush with great grip, no hair loss and very easy to use

HOW TO USE dap the brush vertically into the cream foundation and massage into the face with circular movement

FACE BRUSHES



LARGE POWDER BRUSH no. 12

FIBER bristle cosmetic goat

DESCRIPTION large brush ideal for applying loose and compact powders or face&body bronzers. With aluminium sleeve and wooden handle

STRENGTHS long-life brush with great grip, no hair loss and very easy to use

HOW TO USE always use the sides of this brush when applying a powder or a bronzer



POWDER/BLUSH BRUSH no. 11

FIBER bristle cosmetic goat

DESCRIPTION angled brush for applying blush and shaping powders. With aluminium sleeve and wooden handle

STRENGTHS long-life brush with great grip, no hair loss and very easy to use

HOW TO USE opposite to the large powder brush, use this brush vertically on the face to get the best use of the angle

FACE BRUSHES



BLUSH BRUSH nr. 13

FIBER bristle cosmetic goat

DESCRIPTION conic round shape brush for compact powders. Natural bristles, aluminium sleeves and wooden handle

STRENGTHS ideal for the application of blush, brightener and powder products. Perfect to obtain a light and blend result, while defining and shaping the face contours

HOW TO USE use the tip of the brush to take and apply the product. Blend with soft movements



KABUKI

FIBER synthetic

DESCRIPTION this amazing kabuki brush with precious synthetic bristles allows a uniform, without stripes, spots or irregularities. The thick brush bristles of the kabuki allow a perfect absorption of the powder. The soft rounded tips are very soft and gentle on the skin. The Nee Make Up kabuki brush has been designed specifically for compact powders: Terra Bronze, Terracotta, Dual Matte Wear

STRENGTHS the thick bristles of the kabuki brush allow the perfect absorption of the powder. The soft rounded tips are very soft and gentle on the skin. Easy and fast to use anywhere with its special beauty

HOW TO USE apply the desired amount of powder directly with the Kabuki brush. Beat the brush on the back of your hand to discharge any excess of powder. Spread the powder from the inside to the outside, performing circular movements and exerting a slight pressure

EYE BRUSHES



COMB BRUSH WITH BRISTLES no. 0

FIBER synthetic

DESCRIPTION double sided eyelash and eyebrow comb. With aluminium sleeve and wooden handle

STRENGTHS long-life brush with great grip, no hair loss and very easy to use

HOW TO USE use the thick bristle comb to separate the lashes and the black bristle side to shape the eyebrows



MINI EYELINER BRUSH nr. 101

FIBER Synthetic

DESCRIPTION a small brush with an extra fine tip perfect for outlining the eye. Accurate, firm and uniform touch

STRENGTHS Its mini size makes it the perfect ally to always carry with you to delineate and intensify the eye, in every situation

HOW TO USE with liquid or cream products. Take the correct quantity of product and outline the eye with extreme precision

EYE BRUSHES



FLAT DEFINER BRUSH nr. 99

FIBER synthetic

DESCRIPTION eye brush. Compact silks, flat shape. Aluminum cap and wooden handle

STRENGTHS it is ideal for delineating and defining the eye with the use of powder eyeshadows or emollient-based products. Apply the color with a simple touch giving an immediate definition

HOW TO USE apply the eyeshadow directly with the brush by applying the product according to the desired intensity. Use the tip of the brush along the eye contour to blend



EYE BLENDER no. 5

FIBER pony hair

DESCRIPTION blending eyeshadow brush, with aluminium sleeve and wooden handle

STRENGTHS long-life brush with great grip, no hair loss and very easy to use

HOW TO USE blending brush for eyeshadows, apply the eyeshadows with the eyeshadow brushes, then blend the lines together with this brush using circular movements

EYE BRUSHES



WHITE EYE BLENDER nr. 66

FIBER bristle cosmetic goat

DESCRIPTION semi flat medium brush with oval tip, specific for the eyes. Natural bristles, aluminium sleeves and wooden handle

STRENGTHS the brush shape allows a perfect blend.
Ideal for mixing and applying creams and powders

HOW TO USE apply the eyeshadow directly with the brush according with the intensity desired



MINI WHITE EYE BLENDER nr. 16

FIBER natural

DESCRIPTION a small brush perfect for blending eye shadows and completing the make-up of the eye. Composed by soft natural bristles

STRENGTHS Its mini size and tapered head are perfect for a controlled application and to easily and correctly blend the powders

HOW TO USE directly apply the eyeshadow with the brush spreading the product according to the desired intensity

EYE BRUSHES



TAPERED BLENDING BRUSH nr. 55

FIBER bristle cosmetic goat

DESCRIPTION natural and soft bristles eyes brush. Round tip. Aluminium sleeves and wooden handle

STRENGTHS ideal for a precise eyeshadows and compact powders application

HOW TO USE take the product and blend. Otherwise it can also be used only to blend the product that has already been applied



EYESHADOW BRUSH no. 6

FIBER pony hair

DESCRIPTION flat eyeshadow brush with aluminium sleeve and wooden handle

STRENGTHS long-life brush with great grip, no hair loss and very easy to use

HOW TO USE always apply an eyeshadow using pressing techniques instead of sweeping. This will give a more intense effect and will prevent smudging of the colour

EYE BRUSHES



LARGE EYESHADOW BRUSH nr. 88

FIBER bristle cosmetic goat

DESCRIPTION large round tip eyes brush. Natural bristles, aluminium sleeves and wooden handle

STRENGTHS ideal for extended blends or an accurate one color application. Extremely easy to use thanks to its size and the full consistency of the bristles

HOW TO USE apply the product directly with the brush on the desired area



MEDIUM SHADER BRUSH no. 7

FIBER pony hair

DESCRIPTION medium eyeshadow &blend brush. With aluminium sleeve and wooden handle

STRENGTHS long-life brush with great grip, no hair loss and very easy to use

HOW TO USE apply large amounts of colour on the eyelids with this brush or blend eyeshadows together

EYE BRUSHES



SHORT SHADE BRUSH nr. 77

FIBER natural

DESCRIPTION specific brush for shading. Made with a flat head in the shape of a scoop, it collects and distributes the product evenly

STRENGTHS brush in natural fiber, ideal for applying the eye shadow on large areas of the eyelid or for intense binding. Its reduced form is ideal for obtaining a precise finish

HOW TO USE take the eyeshadow and apply at the desired points. To increase the writing effect and color holding, it is advisable to tap the color and do not blend it



MULTI-USAGE APPLICATOR 6 pz

FIBER synthetic

DESCRIPTION multi-usage sponge tip applicator. For application of both a powder and a cream eyeshadow

STRENGTHS double tip blending applicator. Six pack.

HOW TO USE dabbing the colours with these brushes is recommended

EYE BRUSHES



SLANTING EYEBROW BRUSH no. 2

FIBER synthetic

DESCRIPTION angular eyebrow brush with aluminium sleeve and wooden handle

STRENGTHS perfect angled brush for filling empty spaces in eyebrows with powder, cream or wax

HOW TO USE always build colour when using this brush, especially with powder. Use a light touch to achieve the perfect shape

EYE & LIP BRUSHES



EYE & LIP BRUSH no. 3

FIBER synthetic

DESCRIPTION eyepencil brush and lip brush with aluminium sleeve and wooden handle

STRENGTHS multi-use brush. Perfect for lipstick and the best eyepencil blender there is. Long-life brush with great grip, no hair loss and very easy to use

HOW TO USE use this as your basic lipstick brush or blend the eyepencil, kajal or kohl after drawing a line to create a more natural look or a smokey effect

TROUSSE



PROFESSIONAL BRUSH TROUSSE

DESCRIPTION brushes cosmetic bag a must have for make up artist. highest quality materials

It contains: 12 brushes - 6 multi-usage applicator

6 mascara applicator - 1 pro sponge

1 powder-puff with handle - 1 pencil sharpener

1 eyebrows clip

STRENGTHS the practical belt to tie at the waist or at the back of the make up chair makes it easier to work with the brushes. Also available empty

ACCESSORIES



BRUSH CLEANER 100 ml

DESCRIPTION detergent sanitizer for make-up brushes. Medical product, contains an antibacterial agent that effectively and quickly removes the surface make-up residuals between one use and the other

STRENGTHS practical and easy-to-use, its gentle formula is perfect both on synthetic bristles and on natural ones

HOW TO USE spray the product directly on the brush after using. Gently dry with a tissue. The brush can be used immediately after cleaning



POWDER PUFF WITH HANDLE

MATERIAL velvet

DESCRIPTION professional powder puff, soft black velvet, 9 cm diameter

STRENGTHS ideal for applying compact and loose powders and to keep you safe from smudging a perfectly done make-up

HOW TO USE soak the puff softly with powder and apply on face with the gently dabbing technique

COTTON BUDS



DESCRIPTION special cosmetic sticks with double tip. Specific for precise touch up

KIT VISAGISTA



DESCRIPTION make-up kit with some application essentials
Contains: Multi Use applicator set (6 pc)
Powder puff with handle
Luxe latex make-up sponge

ACCESSORIES



ICON BLENDER

FIBER innovative

DESCRIPTION iconic sponge, essential to make a perfect make-up. The application of foundation, concealers, illuminants, blushes and powders will have an ultra-natural effect, because Icon Blender absorbs the product and releases it delicately on the skin

STRENGTHS thanks to its ergonomic egg shape and its delicate ultra comfortable texture, it adapts perfectly to the contours of the face and the make-up result will be impeccable. The Micro Mini version is ideal for those who loves precision and for applying correctors in the eye contour area.

HOW TO USE damp, wring and dry Icon Blender before use. Dab on the face primer, foundation, concealers, blush or any other make up product for an impeccable and ultra natural result



LATEX SPONGE PRO SPONGE

MATERIAL latex

DESCRIPTION make-up sponges for both foundations and concealers.

STRENGTHS multi-usage sponges, soft and durable, washable and reusable

HOW TO USE dab or sweep the foundation on (dabbing is recommended). Dab the concealer directly on the blemishes or mix with foundation

ACCESSORIES



PENCIL SHARPENER BIG PENCIL SHARPENER SMALL PENCIL SHARPENER

MATERIAL plastic case

DESCRIPTION pencil sharpener for eye and lip pencils

STRENGTHS one of the most important essentials. Don't ever work without one nearby

HOW TO USE insert the pencil in the sharpener and sharpen to obtain a perfect tip. When you just sharpened your eye pencil, round the pointy tip by drawing a line on the back of your hand



EYEBROW CLIP

MATERIAL stainless steel

DESCRIPTION eyebrow clipper. Ideal for retouching and perfecting the line of the eyebrow

STRENGTHS perfectly angled and shaped clipper

HOW TO USE always use the clipper safely while defining the line of the brow. Never pull a hair against but always with the growth of the hair



MASCARA APPLICATOR SINGLE USE 25 pz

DESCRIPTION single use applicator with delicate synthetic bristles. Ideal for the mascara application, comb the eyebrows, blend the product or remove the powder excess from the eyelashes in an hygienic and professional way



GLOSS APPLICATOR SINGLE USE 25 pz

DESCRIPTION single use applicator with flat and round tip. Soft synthetic material for a comfortable application. Ideal to apply lips products in an hygienic and professional way

ACCESSORIES



NAIL FILE

MATERIAL smoothing cardboard

DESCRIPTION professional and commercial smoothing file, suitable for trimming and shaping all nails

STRENGTHS double sided file for both shaping and styling the nails

HOW TO USE with the hard side you shape the nail, with the other side you smoothen and style them

MAKE-UP CUBE



DESCRIPTION multi-usage tissues.
Two veils of pure and soft cellulose.
Finish smooth

Discover the world of nee make-up www.neemakeupmilano.com



Nee Make Up Milano



neemakeupmilano